

THE UNIVERSITY OF NORTH CAROLINA AT CHAPEL HILL

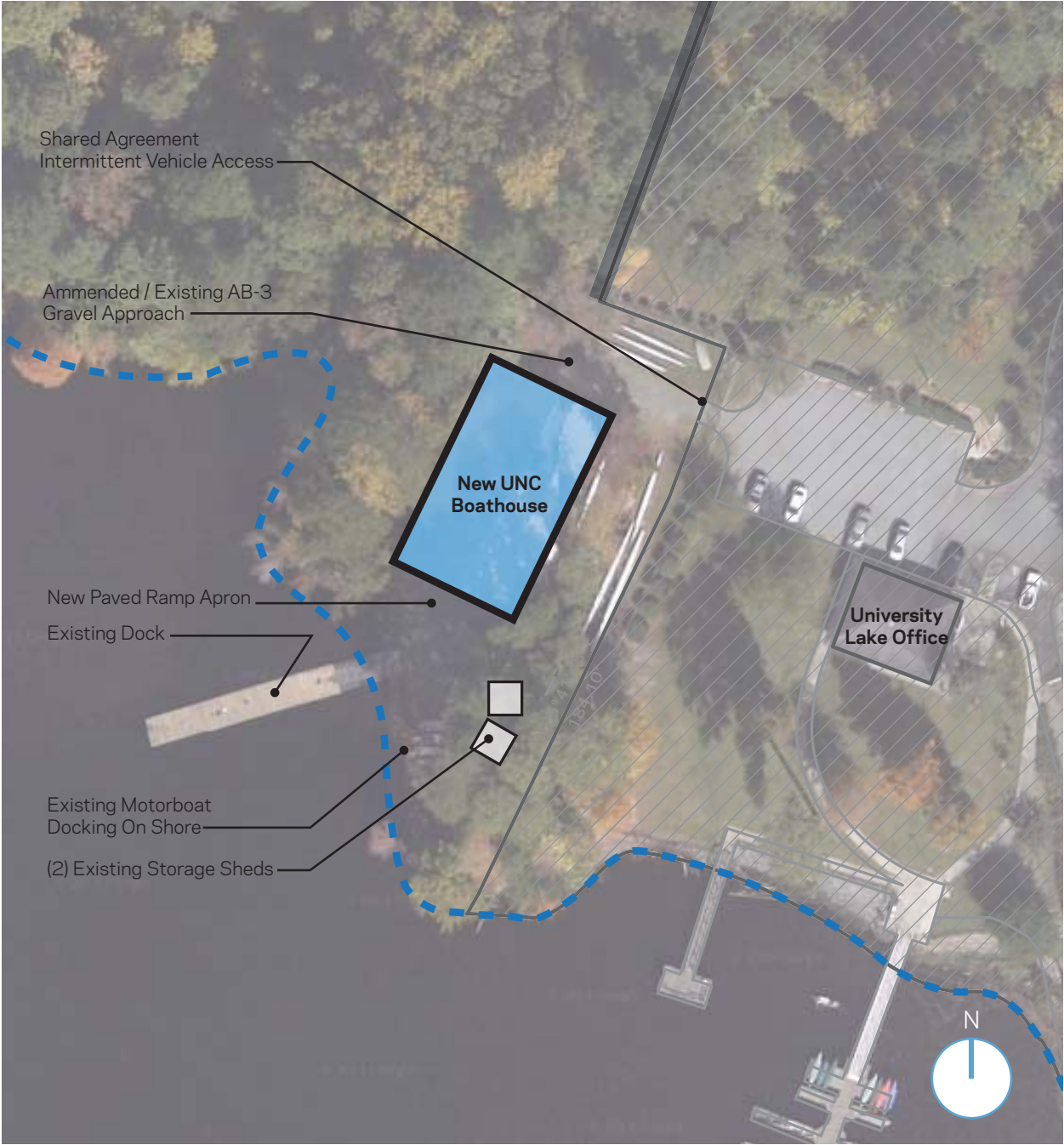
CAMPUS RECREATION BOATHOUSE MASTER PLAN





BRANDING SCHEME

SITE PLAN



CONCEPT PLAN DIAGRAM

(3) bay Boathouse, shared use Student Recreation / Master's Club

- 50' x 100' Pre-engineered clear span structure, non-tapered steel columns, concrete slab and foundation, uninsulated shell, prefinished metal panels
- Roof: 2" nominal standing seam roof, 2:12 slope, 19' eave, 24' ridge
- Sidewalls: 2" nominal corrugated panels
- Endwalls: flat embossed panels
- New underground electrical service, flood-proofed receptacles
- LED high-bay fixtures and LED exterior wall packs, (2) 12' diameter Big Ass Fan Basic 6 Model, (6) motorized overhead doors

POSSIBLE BOAT RACKING

Bay 1

- 3 High Rack: 6 Singles, 6 Doubles
- 4* High Rack: 8 Singles, 8 Doubles
- 5* High Rack: 10 Singles, 10 Doubles

Bay 2

- 3 High Rack: 12 Singles, 6 Quads
- 4* High Rack: 16 Singles, 8 Quads
- 5* High Rack: 20 Singles, 10 Quads

Bay 3

- 3 High Rack: 3 Singles, 6 Eights
- 4* High Rack: 4 Singles, 8 Eights
- 5* High Rack: 5 Singles, 10 Eights

(* Mechanical Lift Rack System)

